



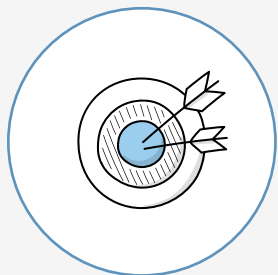
Highlights of the 2021 Survey on Career Development

IBEI graduates are satisfied and recommend the MIR, MID, MIS and Mundus Mapp masters for their professional development.

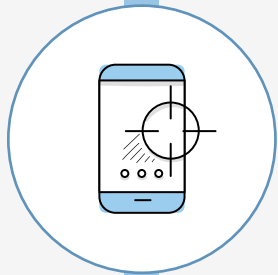
IBEI 2021 report on the job placement of its graduates analyzes data obtained from a survey conducted during the summer of 2021 of all its graduates from 2017, 2018, 2019 and 2020.

This is the fifth time that IBEI has carried out this systematic survey, which aims to collect data every two years on the employment conditions of graduates, and the impact that IBEI's master's degrees have had on their professional careers.

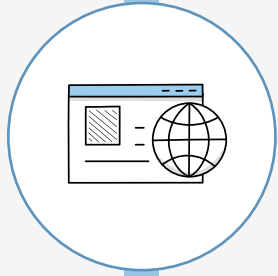
The following conclusions can be drawn from the data analyzed:



Chances of employment are high after graduation



+ Than 85% of graduates find a job during the first year after completing the Masters'



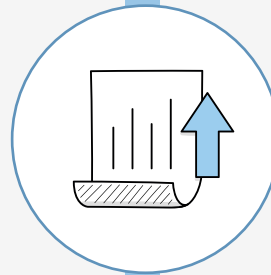
60% of IBEI graduates work in the global and multinational scope



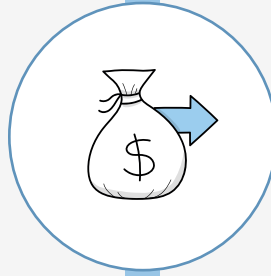
90% recommend the IBEI Masters' programmes



They build **networks in international institutions, private companies and NGOs**



About **half of the survey respondents have a permanent contract**



44% of graduates earn more than 40K after 5 years of graduation

More info and full report available at www.ibeio.org